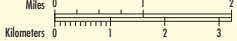


Norfolk Lake

Arkansas and Missouri

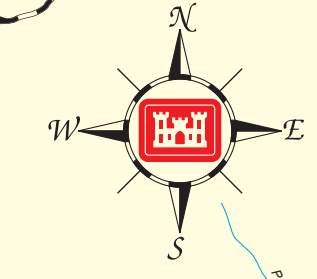
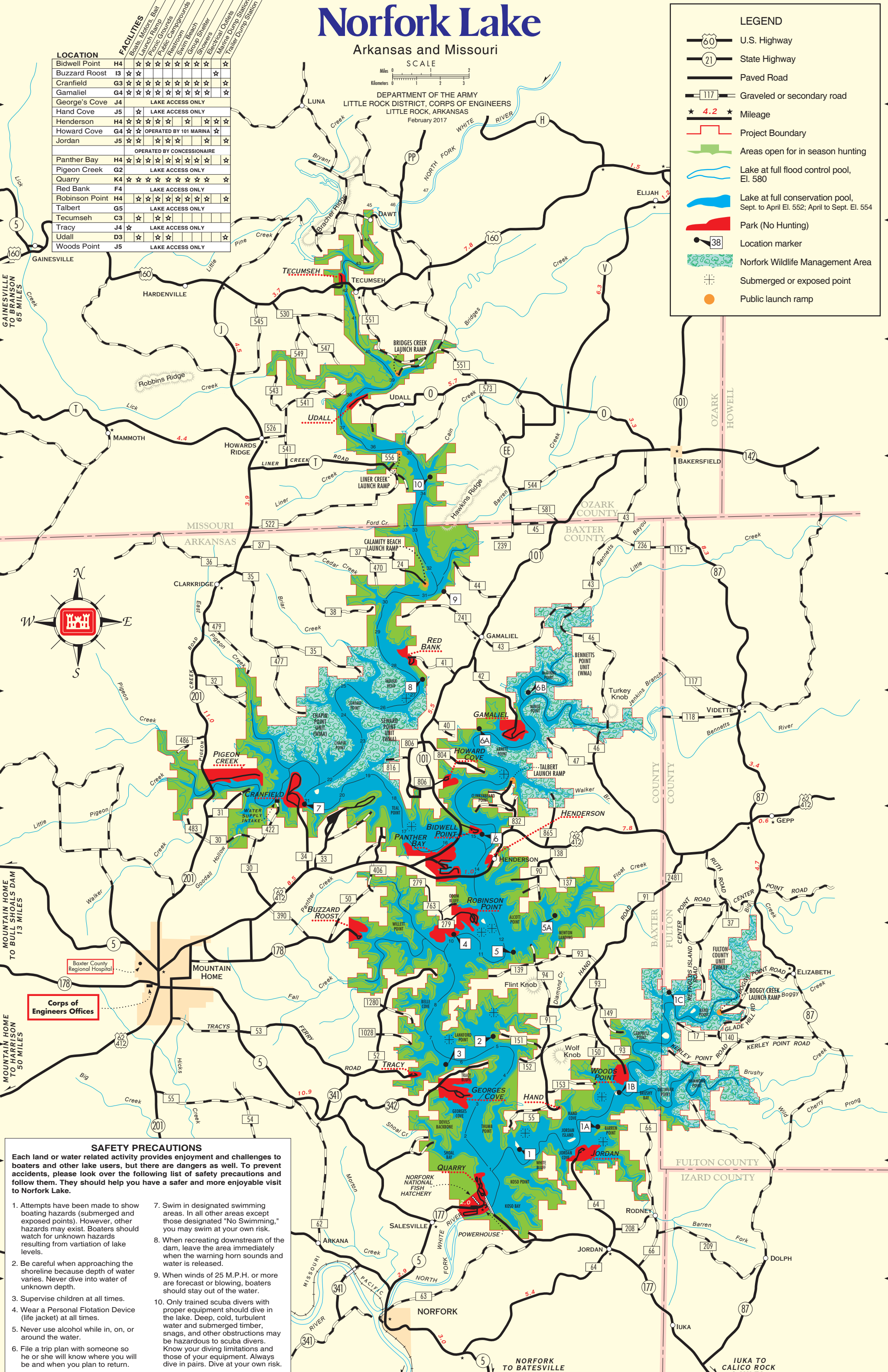
SCALE



DEPARTMENT OF THE ARMY
LITTLE ROCK DISTRICT, CORPS OF ENGINEERS
LITTLE ROCK, ARKANSAS
February 2017

LOCATION	Access	Boats	Launch	Public	Swim	Group	Electrical	Marina	Trailer
Bidwell Point	H4	★	★	★	★	★	★	★	★
Buzzard Roost	I3	★	★	★	★	★	★	★	★
Cranfield	G3	★	★	★	★	★	★	★	★
Gamaliel	G4	★	★	★	★	★	★	★	★
George's Cove	J4	★	★	★	★	★	★	★	★
Hand Cove	J5	★	★	★	★	★	★	★	★
Henderson	H4	★	★	★	★	★	★	★	★
Howard Cove	G4	★	★	★	★	★	★	★	★
Jordan	J5	★	★	★	★	★	★	★	★
OPERATED BY CONCESSIONAIRE									
Panther Bay	H4	★	★	★	★	★	★	★	★
Pigeon Creek	G2	★	★	★	★	★	★	★	★
Quarry	K4	★	★	★	★	★	★	★	★
Red Bank	F4	★	★	★	★	★	★	★	★
Robinson Point	H4	★	★	★	★	★	★	★	★
Talbert	G5	★	★	★	★	★	★	★	★
Tecumseh	C3	★	★	★	★	★	★	★	★
Tracy	J4	★	★	★	★	★	★	★	★
Udall	D3	★	★	★	★	★	★	★	★
Woods Point	J5	★	★	★	★	★	★	★	★

LEGEND	
	U.S. Highway
	State Highway
	Paved Road
	Graveled or secondary road
	Mileage
	Project Boundary
	Areas open for in season hunting
	Lake at full flood control pool, El. 580
	Lake at full conservation pool, Sept. to April El. 552; April to Sept. El. 554
	Park (No Hunting)
	Location marker
	Norfolk Wildlife Management Area
	Submerged or exposed point
	Public launch ramp



MOUNTAIN HOME TO BULL SHOALS DAM 13 MILES

MOUNTAIN HOME TO HARRISON 50 MILES

Corps of Engineers Offices

SAFETY PRECAUTIONS

Each land or water related activity provides enjoyment and challenges to boaters and other lake users, but there are dangers as well. To prevent accidents, please look over the following list of safety precautions and follow them. They should help you have a safer and more enjoyable visit to Norfolk Lake.

- Attempts have been made to show boating hazards (submerged and exposed points). However, other hazards may exist. Boaters should watch for unknown hazards resulting from variation of lake levels.
- Be careful when approaching the shoreline because depth of water varies. Never dive into water of unknown depth.
- Supervise children at all times.
- Wear a Personal Flotation Device (life jacket) at all times.
- Never use alcohol while in, on, or around the water.
- File a trip plan with someone so he or she will know where you will be and when you plan to return.
- Swim in designated swimming areas. In all other areas except those designated "No Swimming," you may swim at your own risk.
- When recreating downstream of the dam, leave the area immediately when the warning horn sounds and water is released.
- When winds of 25 M.P.H. or more are forecast or blowing, boaters should stay out of the water.
- Only trained scuba divers with proper equipment should dive in the lake. Deep, cold, turbulent water and submerged timber, snags, and other obstructions may be hazardous to scuba divers. Know your diving limitations and those of your equipment. Always dive in pairs. Dive at your own risk.

MOUNTAIN HOME TO BRANSON 65 MILES

NORFOLK TO BATESVILLE 66 MILES

IUKA TO CALICO ROCK 8 MILES